



# LUXEMBOURG

---

**MASTERS  
GRAND PRIX**

| SQUASH  
OPEN

---

26 - 28 MAY 2023



## TOURNAMENT CONTACT

Tournament Director: Nathan SNEYD | [nathan.sneyd@topsquash.lu](mailto:nathan.sneyd@topsquash.lu) | +352 621 497 834  
Tournament SW Operator: Eric Pecheur  
Tournament Referee: TBA

Online entry:  
Instagram

[Click here](#)  
[Click here](#)

[www.topsquash.lu](http://www.topsquash.lu)  
[www.instagram.com/topsquash](https://www.instagram.com/topsquash)



## DATE & TIME

This European Masters GP event will be held from  
May 26<sup>th</sup> – 28<sup>th</sup> 2023

The tournament will start on  
May 26<sup>th</sup> at 14:00

The Prize Giving Ceremony will take place after the  
final match of the tournament  
May 28<sup>th</sup> at 15:00



LUXEMBOURG  
LET'S MAKE IT HAPPEN

## CLOSING DATE FOR ENTRIES

The last chance to enter this event, Monday May 1<sup>st</sup>, 2023

Entries may be closed before this date if the maximum number of entries – 170 – is reached.

Late entries are only acceptable before the seeding is published at the discretion of the Tournament Director and Masters Committee in the interest of the tournament.

## VENUE

Top Squash Fitness and Leisure Centre, 25 rue de la Gare, 5218, Sandweiler, Luxembourg

The venue holds 7 glass back courts, There is a bar serving all beverages and snacks which is well positioned to all courts. A Pro shop is on site providing a racket stringing service. Practice courts are free for participants 24 hours before the event. Booking with the venue is advised.

There is a nice terrace attached to the club which is surrounded by beautiful green forests with walking trails.



## ELIGIBILITY

This event is open to all players who are 35 and older from the first day of the event.

As specified by the ESF, to compete in all ESF Registered events players must hold an active European Squash ID (ESID), which is approved and validated by their MNF and ESF.

Objections to the entry of a player from an MNF must be made without delay after the entry of the player has been published.

Players without a European Squash ID (ESID) can register through [the ESF website \(link\)](#).



## MATCHES

All matches played will consist of the best of five games, under the rules of the WSF. All players are guaranteed a minimum of three matches. The Tournament Organisers will organise plate matches also consisting of the best of five games. PAR 11 scoring with 2 clear points will be used.

## REFEREEING

Both players will be expected to mark and referee matches, usually the next match on the court where they played.



## CATEGORIES

Everybody over 35 is allowed to play and will be divided in 5 years categories and by ladies and men.

The TD reserves the right to amalgamate age groups if there are insufficient entries to make a workable draw. Players are only allowed to enter one category.



## SEEDING

The seeding will be carried out by the Masters Committee Seeding Panel using the latest available results and ESF Masters Rankings valid at the closing date and in accordance with the ESF Masters Circuit Guidelines. The TD will be consulted about seeding of local players.





## INSURANCE

Players enter and play in the tournament at their own risk. Neither the organizers nor the ESF will accept responsibility for any claims including for injury or accident. Suitable insurance must be organized by the player or the participating federation.

## PRIZES

There will be prizes awarded to the top 3 placed players in all played categories. All categories will be awarded ranking points on the ESF Rankings. The ceremony takes place at the latest at 15.00 on May the 28<sup>th</sup> 2023

## ENTRIES

The European Masters Circuit is open to all Masters of any nationality provided the player is not banned by ESF or his MNF. All entries must be made online.

[Click Here](#)

**BALL**

DUNLOP PRO XX.



## TRANSPORT

For players who booked the tournament hotel, transport will be provided from the arrival point on May 26<sup>th</sup> from 08:00 and to departure point on May 28<sup>th</sup> until 6pm.

Arrival/departure point must be Luxembourg station or Luxembourg airport.

Arrivals and departures outside the mentioned periods or to different arrival/departure points will need to arrange their own transportation.

Arrival and departure details (flight number and time) must be communicated to the organizers at least 1 week before tournament start, to plan your pick-up.

There will be a shuttle service between Novotel (tournament hotel) and the venue for all who have chosen to stay at the tournament hotel.

## PAYMENT

The fees and packages, as detailed below, along with the ranking levy current on the date of the tournament per player must be paid to the host by the closing date.

Official Entry and Payment is received online upon using this registration form.

<https://www.topsquash.lu/luxembourg-masters-squash-open-2023/>

The banking details are:

Beneficiary Bank Name: Banque et Caisse d'Epargne de l'Etat  
Beneficiary Bank Address: 1 place de Metz, 1930, Luxembourg  
Account Holder Name: Top Squash Sandweiler a.s.b.l  
Account Holder Address: 25 rue de la Gare, 5218, Sandweiler,  
Luxembourg  
IBAN: LU31 0019 5055 7783 5000  
SWIFT Code/BIC: BCEELULL

Please mark payment clearly with name of event and name of player.

## DRAWS

The seeding lists and time of the first matches for specific age groups will be published at the latest 7 days prior to the start date on the ESF Website

Finalised draws for the event will be published on the ESF Website on the day before the tournament at the latest late afternoon.

## RECORDING / WEB PUBLISHING / LIVE STREAMING

The recording of matches for coaching/performance analysis purposes is acceptable provided the opponent player does not object.

The Luxembourg Masters GP Squash Open will be publishing draws, results, photos of players as well as live streaming from centre court.

Packages	Entry Package	Food Package	Saturday Dinner & Party
Entry Fee, ESF levy and welcome pack	€ 65,-		
Friday Dinner from 18.00		€ 15,-	
Saturday Lunch from 12:30		€ 15,-	
Saturday BBQ & Party	Dinner Served from 18:00 – 21:00		€ 30,-
Sunday Brunch from 11:00		€15,-	

# TOURNAMENT HOTEL

You are required to reserve your own hotel directly using the hotel link.  
Please note these [booking instructions](#) in benefit from promo code.

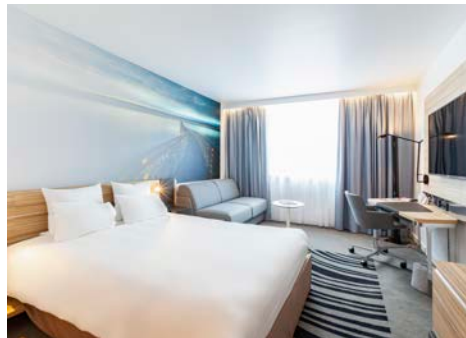
## Novotel Luxembourg Centre

35 Rue du Laboratoire, 1911, Luxembourg

The hotel is perfectly situated in the city centre and is only a 7-minute drive to the venue. We will provide a shuttle that will run frequently between the club and this hotel only throughout the tournament.

Friday – Monday for a classic single room is €145,- p/n

Friday – Monday for a classic double room is €165,- p/n





## ESF REGULATIONS & PENALTIES

This event complies with the ESF Masters Circuit Guidelines, a copy of which is available on the ESF website. The tournament will be run under the terms and conditions as set out in ESF Regulations: Code of Conduct- appendix D. The tournament will be run under the terms and conditions as set out in EUROPEAN SQUASH FEDERATION PRIVACY POLICY as published on the ESF website

[www.europeansquash.com](http://www.europeansquash.com)

A late withdrawal is a withdrawal made 2 days or less before the start date of a tournament. Ranking penalties may be applied to the records of players who fail to turn up or who make a late withdrawal not supported by a medical certificate.

Following a withdrawal, fees and packages should be reimbursed as follows:

- a) Withdrawal before the relevant closing date of a tournament: fees reimbursed in full (less bank charges).
- b) Withdrawal after the relevant closing date and 7 or more days before the start date of a tournament: 50% of fees reimbursed (less bank charges).
- c) Withdrawal 6 days or less before the start date of a tournament: reimbursement at the discretion of the tournament organiser.

If a player has entered a tournament and fails to turn up or fails to play out all scheduled matches for any reason other than illness or injury, then the Code of Conduct may be used to determine disciplinary consequences.

